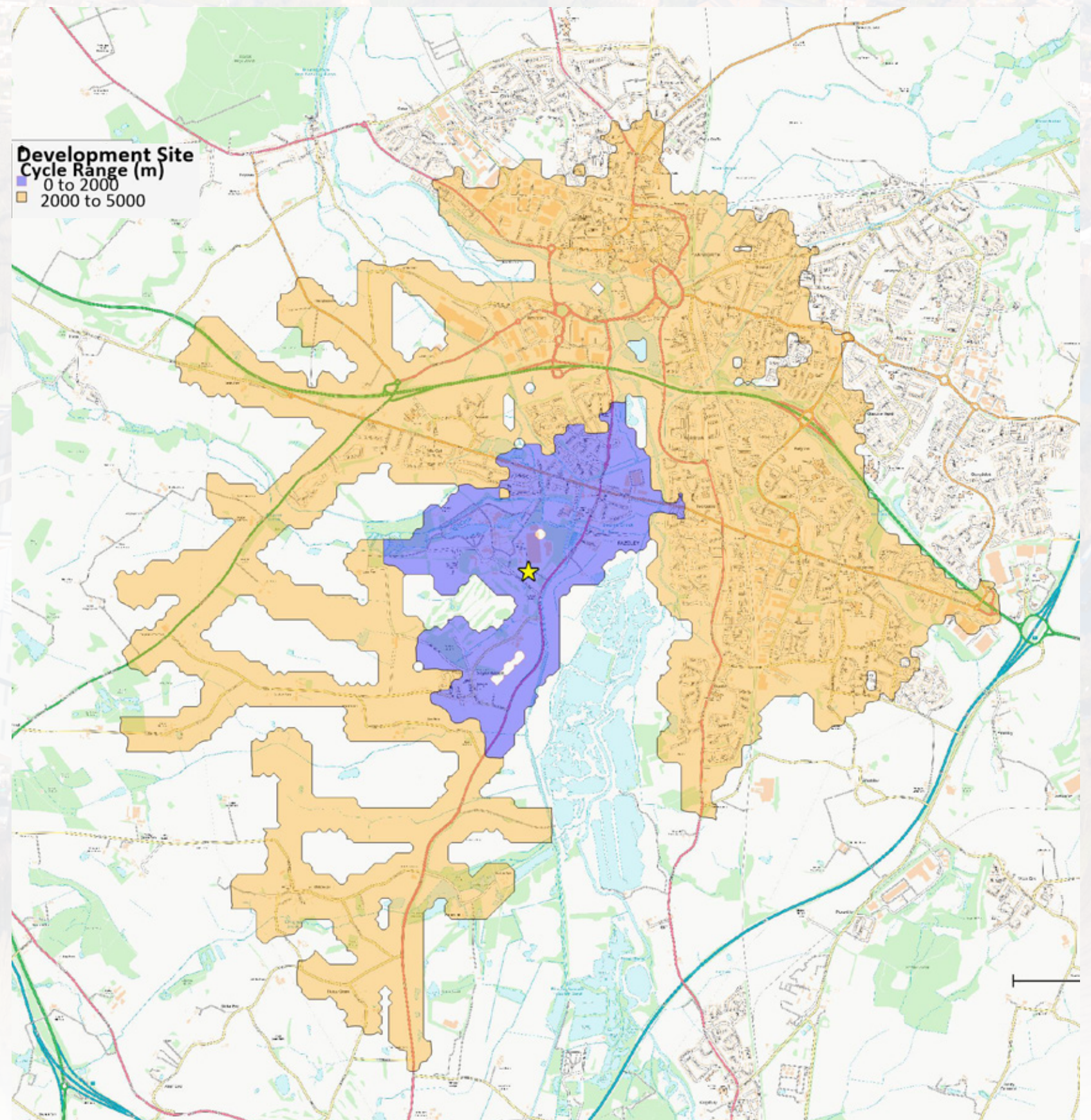


The transport study has reviewed road safety data and concluded that there are no significant highway safety issues in the vicinity of the proposed development and there is no evidence to suggest that the proposed development will exacerbate the accident frequency. The existing site access will continue to be the main access for all modes of transport, including on foot. The site continues to be accessible on foot, cycle and by public transport which is sustainable. Local bus services provide connections to and from the main towns.

A new foot / cycleway alongside the proposed estate road improves the movement of pedestrians and cyclists entering the site and to the new industrial units, that includes defined crossing points to further improve on site safety.

Traffic generation has been considered, based upon TRICS database and observed traffic movements on site and to / from Coleshill Road. This review has shown that the local road network has ample capacity to accommodate the forecast levels of new traffic generated by the new units. Therefore, evidence shows that there will be no unacceptable harm to highway safety or severe impact on the local highway network.



HIGHWAYS

REDEVELOPMENT PROPOSALS